



# Grand Tudor Estate with San Francisco Bay Views

125 LAKEVIEW DRIVE, WOODSIDE | [www.125Lakeview.com](http://www.125Lakeview.com)

Welcome to this Tudor estate, grand in scale on a private oasis with sweeping Bay views and resort-inspired grounds. The setting of approximately 1.5 acres is ever so secluded yet incredibly convenient for access to all points in Silicon Valley or San Francisco. Extensive details unfold throughout with numerous updates adding modern embellishments. Elaborate millwork, architectural ceilings, and floors that include fine parquet and herringbone patterns are reminiscent of an Old World manor, while fresh light finishes enhance the volume and spaciousness of the vast floor plan.

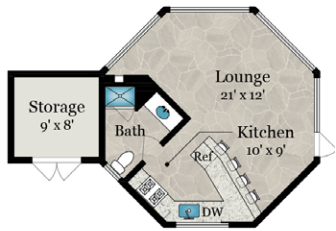
Elegant formal rooms are grand in size for entertaining on a large scale and complemented by more intimate gathering spaces like the family room with cozy fireplace inglenook. Just steps away and above the garage, there is flexible-use space for recreation, fitness, or office needs plus a full theatre with tiered seating and cinema screen. The home's personal accommodations comprise 5 bedrooms highlighted by a secluded wing ideal for guests plus a lavish master suite whose sumptuous collection of rooms encompass the entire second floor.

All around, Bay views take center stage by day or night – whether from the main residence or from the quintessential outdoor entertaining venue with pool, spa, fire pit, barbecue kitchen, and gazebo. Plus, a pool house with full kitchen and bath serves equally well for poolside entertaining as it does for guest visits. English gardens envelop the grounds with color and fragrance, towering live oaks enhance the privacy, and walking paths invite quiet contemplation – an exquisite respite and a wonderful place to call home midway between San Francisco and Silicon Valley.

Price upon request

For video, floor plans, additional photos, and information, visit  
[www.125Lakeview.com](http://www.125Lakeview.com)



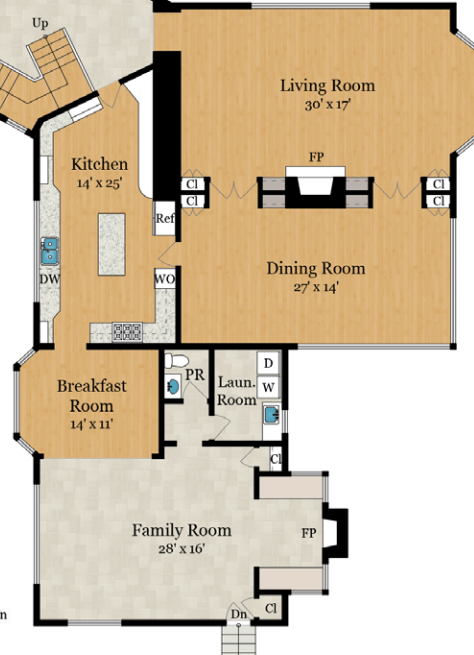


**POOL HOUSE**  
395 SQ FT

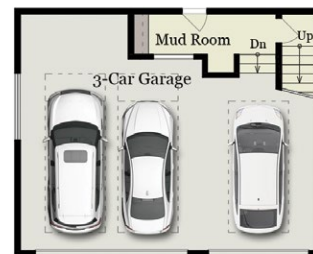
**MAIN RESIDENCE  
UPPER LEVEL**  
1,820 SQ FT



**MAIN RESIDENCE  
MAIN LEVEL**  
5,085 SQ FT



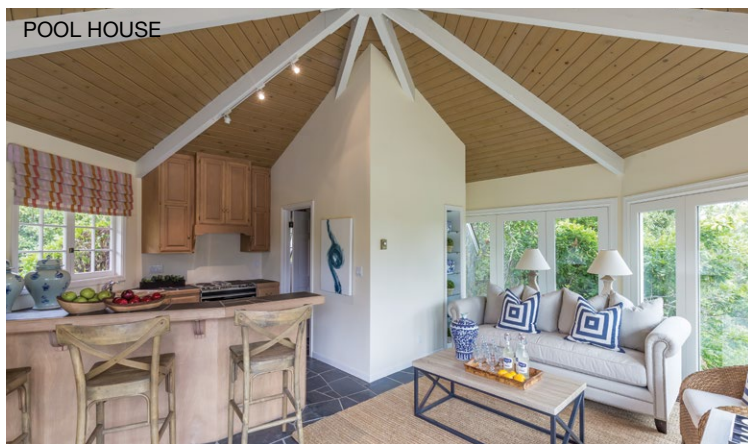
**SITE PLAN**



**DETACHED GARAGE  
FIRST FLOOR**  
150 SQ FT - Finished  
600 SQ FT - Unfinished



**DETACHED GARAGE  
SECOND FLOOR**  
490 SQ FT  
RECREATION/FITNESS ROOM  
AND THEATRE









## SUMMARY OF THE HOME

- Two-story Tudor main residence plus pool house and 3-car garage with recreation/fitness room and theatre
- Resort-like grounds with sweeping San Francisco Bay views
- Main residence with 5 bedrooms, 5 full baths, and 2 half-baths
- Approximately 8,630 total square feet
  - Main house: 6,905 square feet
  - Pool house: 395 square feet
  - Recreation room and theatre: 640 square feet
  - Detached garage: 600 square feet
  - Storage: 90 square feet
- Main level: entrance salon, formal living room, formal dining room, second living room, gourmet kitchen and breakfast room, family room, two bedroom suites, and two additional bedrooms with shared bath
- Upper level: master bedroom suite with lounge, office, and two full baths
- Fine hardwood floors in most rooms, many with parquet pattern
- Pool house with full kitchen and bath
- 3-car detached garage with upper-level recreation/fitness room and theatre
- Beautiful pool and spa, barbecue kitchen, fire pit, and gazebo
- Approximately 1.5 acres with English gardens, many seasonal bulbs, and mature trees
- Excellent Las Lomas schools

Price upon request

For video, floor plans, additional photos, and information, visit [www.125Lakeview.com](http://www.125Lakeview.com)



**HUGH  
CORNISH**  
& ASSOCIATES  
HughCornish.com



**HUGH CORNISH**

650.619.6461  
hugh@hughcornish.com  
CalRE#00912143



**STEPHANIE ELKINS  
VAN LINGE**

650.400.2933  
stephanie@hughcornish.com  
CalRE#00897565

Ranked Top 1% Internationally  
– Coldwell Banker  
Ranked #210 Nationally  
by *The Wall Street Journal*, 2018  
Over \$2 Billion in Sales



GLOBAL  
LUXURY